







SEE SHEET A-4

REV. #1	AERIAL UPDATE	SUM	
01/2012			
REV. #2	2017 UPDATE	DUN	
01/2017			
No.	REVISION	DATE	BY

**LEGEND**

- ⊙ SSMH
- ⊙ SSCO
- A-1-6-1-1 MANHOLE NUMBER
- 1+00 STATION
- 4089.5 APPROX. GROUND ELEV.
- 4082.23 INVERT ELEV.
- 19+21 SERVICE STATIONING
- SOUTH SUBURBAN DISTRICT BOUNDARY
- (A) ABANDONED

**SEWER  
MAINS & LATERALS  
PLAN**

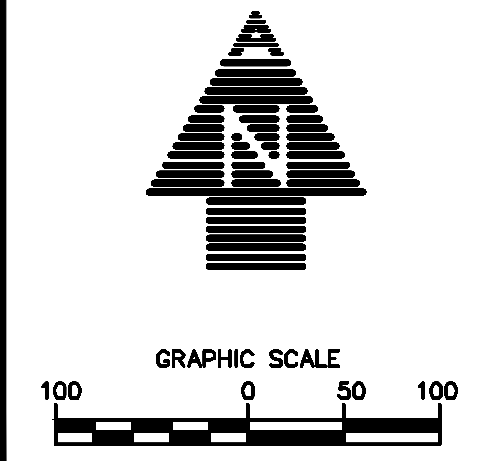


**ADKINS**  
CONSULTING  
ENGINEERING, LLP

▲ Planning  
▲ Surveying  
▲ Engineering

Klamath Falls, Oregon 97603  
2950 Shasta Way  
TEL (541) 884-4666  
FAX (541) 884-5335

SCALE	1"=100'
DATE	1/3/2017
SHEET	3 OF 52
PROJ.	2048-3602



**SHEET A-3**

NUMBER TO: P:\Main\Projects\2016\20160606\ADKINS\20160606\115513.dwg 4/16/2017

SEE SHEET A-3



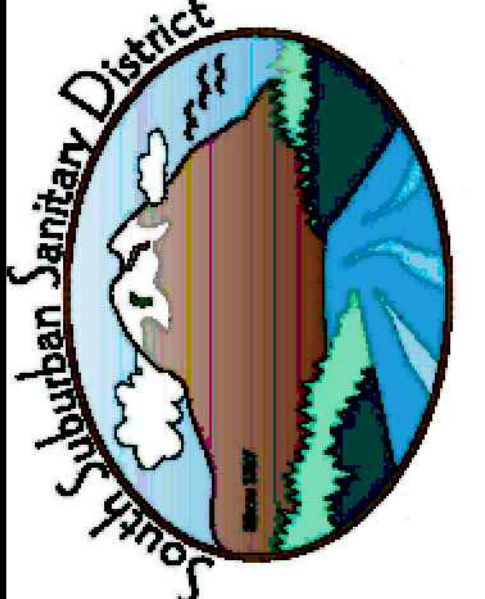
SEE SHEET A-5

REV. #1	AERIAL UPDATE	01/2012	SJM
REV. #2	2017 UPDATE	01/2017	DJN
No.	REVISION	DATE	BY

**LEGEND**

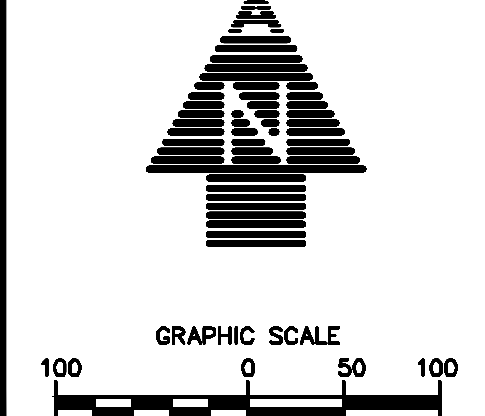
- ⊙ SSMH
- ⊙ SSCO
- A-1-6-1-1 MANHOLE NUMBER
- 1+00 STATION
- 4089.5 APPROX. GROUND ELEV.
- 4082.23 INVERT ELEV.
- 19+21 SERVICE STATIONING
- SOUTH SUBURBAN DISTRICT BOUNDARY
- (A) ABANDONED

**SEWER MAINS & LATERALS PLAN**



**ADKINS**  
 CONSULTING ENGINEERING, LLP  
 Planning, Surveying, Engineering  
 Klamath Falls, Oregon 97603  
 2950 Shasta Way  
 TEL (541) 884-4666  
 FAX (541) 884-5335

SCALE	1"=100'
DATE	1/3/2017
SHEET	4 OF 52
PROJ.	2048-3602



SHEET A-4

NUMBER 31 TO 41 Master Plan Update 2015/NOVEMBER/ADKINS 622203 11.15.16 AM 4/4/2017

SEE SHEET A-4



S.S.S.D. OXIDATION PONDS

OLD PUMP HOUSE

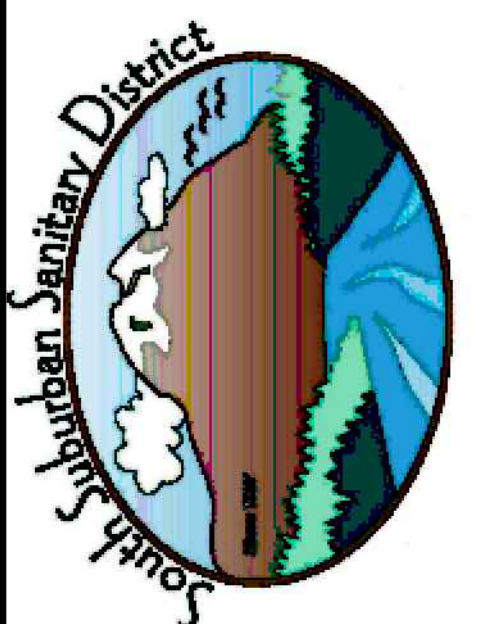
6" (PRIVATE LINE)

REV. #1	AERIAL UPDATE	SUM
01/2012		
REV. #2	2017 UPDATE	D/JN
01/2017		

**LEGEND**

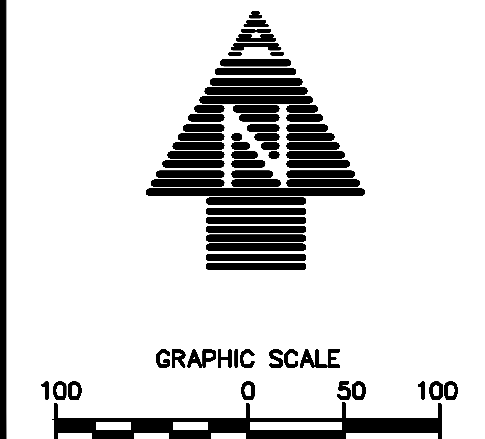
- ⊙ SSMH
- ⊙ SSCO
- A-1-6-1-1 MANHOLE NUMBER
- 1+00 STATION
- 4088.5 APPROX. GROUND ELEV.
- 4082.23 INVERT ELEV.
- 19+21 SERVICE STATIONING
- SOUTH SUBURBAN DISTRICT BOUNDARY
- ⓐ ABANDONED

**SEWER MAINS & LATERALS PLAN**



**ADKINS**  
 CONSULTING ENGINEERING, LLP  
 Klamath Falls, Oregon 97603  
 2950 Shasta Way  
 TEL (541) 884-4666  
 FAX (541) 884-5335

SCALE	AS SHOWN
DATE	1/3/2017
SHEET	5 OF 52
PROJ.	2048-3602



SHEET A-5

SEE SHEET A-6

NUMBER 3170 - P:\Main\Per\1000\2016\0000000000\ADKINS\220201711161616.dwg









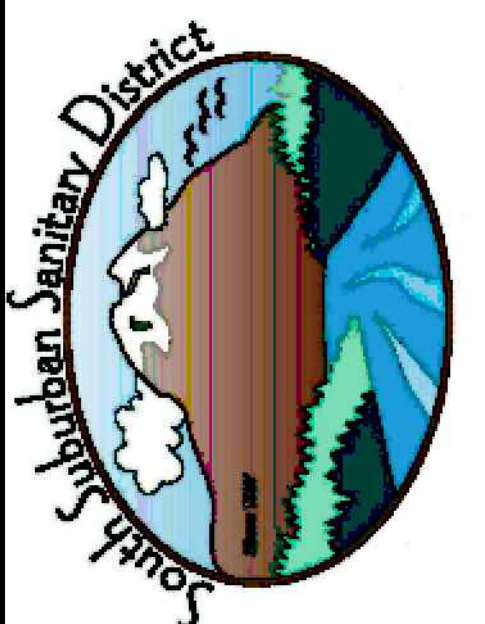


REV. #1	AERIAL UPDATE	01/2012	SJM
REV. #2	2017 UPDATE	01/2017	D/JN
No.	REVISION	DATE	BY

**LEGEND**

- ⊙ SSMH
- ⊗ SSCO
- A-1-6-1-1 MANHOLE NUMBER
- 1+00 STATION
- 4088.5 APPROX. GROUND ELEV.
- 4082.23 INVERT ELEV.
- 19+21 SERVICE STATIONING
- SOUTH SUBURBAN DISTRICT BOUNDARY
- (A) ABANDONED

**SEWER  
MAINS & LATERALS  
PLAN**

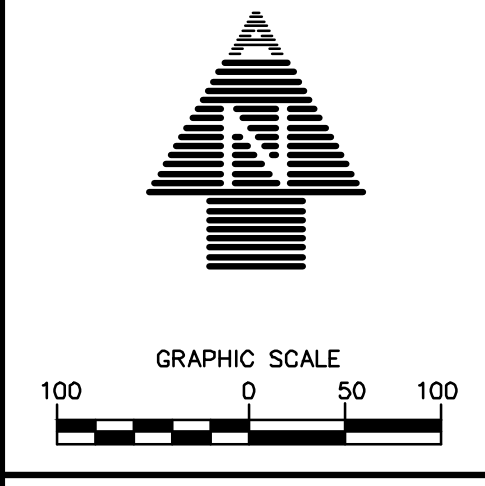


**ADKINS**  
CONSULTING  
ENGINEERING, LLP

▲ Planning  
▲ Surveying  
▲ Engineering

Klamath Falls, Oregon 97603  
2950 Shasta Way  
TEL (541) 884-4666  
FAX (541) 884-5335

SCALE 1"=100'  
DATE 1/3/2017  
SHEET 9 OF 52  
PROJ. 2048-3602



**SHEET B-2**

NUMBER 1710 - P:\MapInfo\Projects\2016\2048-3602\DWG\20170131\SSJ.dwg  
 1/31/2017 10:58:11 AM

SEE SHEET B-3

SEE SHEET C-2

SEE SHEET B-2



SEE SHEET B-4

REV. #1	AERIAL UPDATE	01/2012	S.M.	BY
REV. #2	2017 UPDATE	01/2017	D.J.N.	DATE
No.				REVISION
				DATE

**LEGEND**

- ⊙ SSMH
- ⊙ SSCO
- A-1-6-1-1 MANHOLE NUMBER
- 1+00 STATION
- 4088.5 APPROX. GROUND ELEV.
- 4082.25 INVERT ELEV.
- 19+21 SERVICE STATIONING
- SOUTH SUBURBAN DISTRICT BOUNDARY
- ⓐ ABANDONED

**SEWER  
MAINS & LATERALS  
PLAN**



**ADKINS**  
CONSULTING  
ENGINEERING, LLP

▲ Planning  
▲ Surveying  
▲ Engineering

Klamath Falls, Oregon 97603  
2950 Shasta Way  
TEL (541) 884-4666  
FAX (541) 884-5335

SCALE	1"=100'
DATE	1/3/2017
SHEET	10 OF 52
PROJ.	2048-3602

GRAPHIC SCALE  
100 0 50 100

SHEET B-3

SEE SHEET A-3

SEE SHEET C-3

NUMBER 1710 - P:\Main\Projects\2016\20160309\BND\DWG\_62202311.SDW.dwg  
 1/13/2017 10:58:11 AM

SEE SHEET B-3

SEE SHEET B-5



SEE SHEET A-4

SEE SHEET C-4

REV. #1	AERIAL UPDATE	01/2012	S.M.	D.N.
REV. #2	2017 UPDATE	01/2017	D.N.	

LEGEND	
⊙	SSMH
⊙	SSCO
A-1-6-1-1	MANHOLE NUMBER
1+00	STATION
4089.5	APPROX. GROUND ELEV.
4082.23	INVERT ELEV.
19+21	SERVICE STATIONING
---	SOUTH SUBURBAN DISTRICT BOUNDARY
⊙	ABANDONED

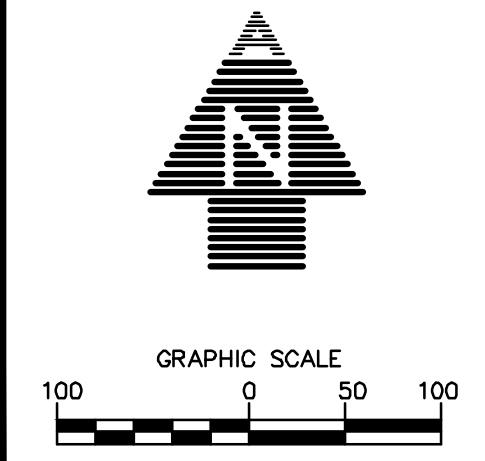
**SEWER MAINS & LATERALS PLAN**



**ADKINS**  
 CONSULTING ENGINEERING, LLP  
 Planning  
 Surveying  
 Engineering

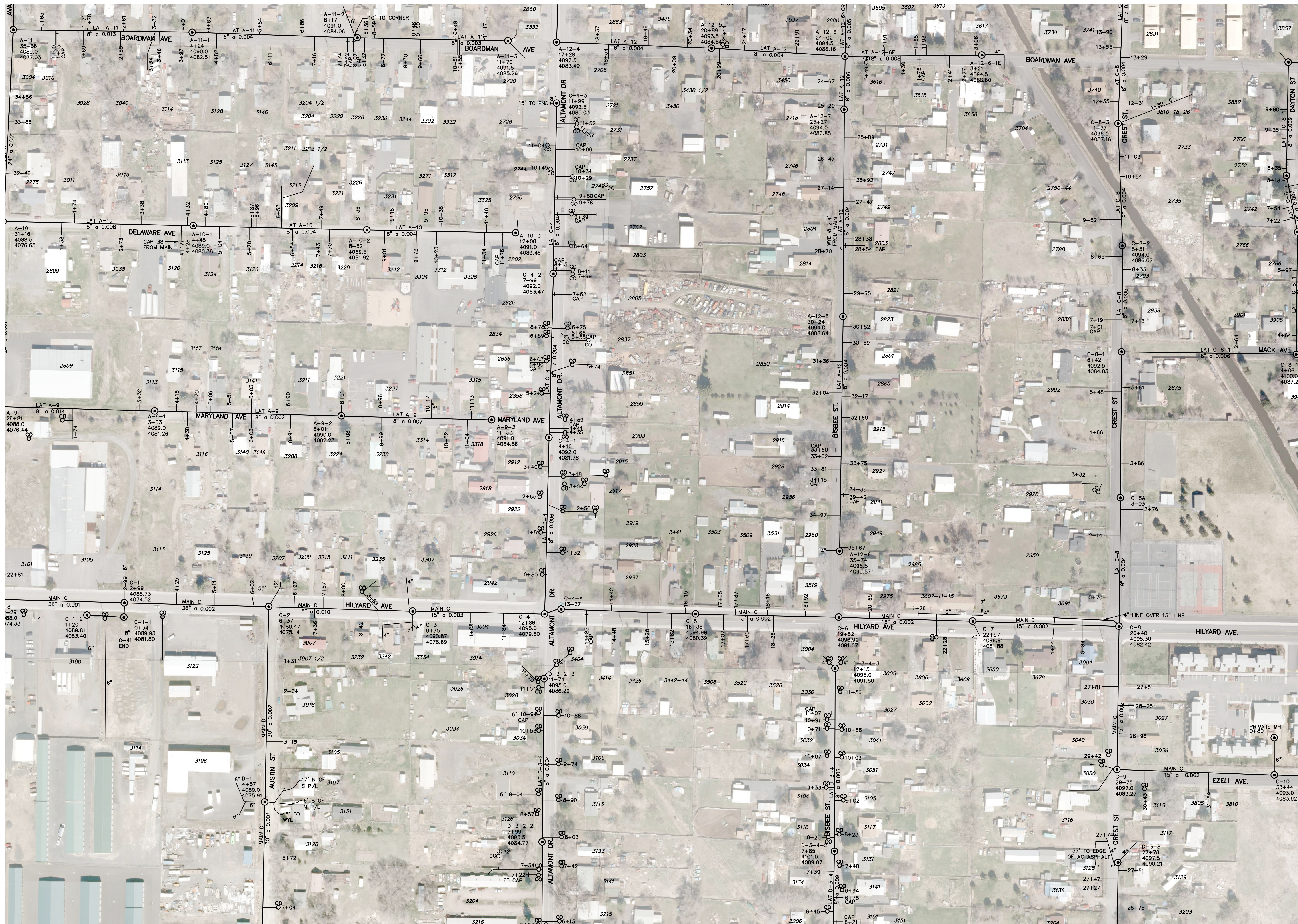
Klamath Falls, Oregon 97603  
 2950 Shasta Way  
 TEL (541) 884-4666  
 FAX (541) 884-5335

SCALE	1"=100'
DATE	1/3/2017
SHEET	11 OF 52
PROJ.	2048-3602



SHEET B-4

SEE SHEET B-4



SEE SHEET B-6

REV. #1	AERIAL UPDATE	S.M.	DATE
01/2012			
REV. #2	2017 UPDATE	D.N.	
01/2017			

**LEGEND**

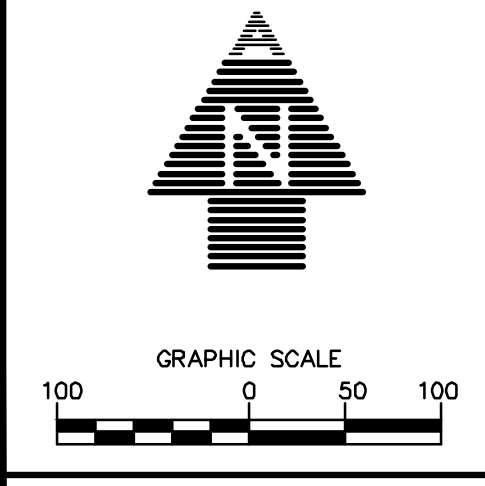
- ⊙ SSMH
- ⊙ SSCO
- A-1-6-1-1 MANHOLE NUMBER
- 1+00 STATION
- 4089.5 APPROX. GROUND ELEV.
- 4082.23 INVERT ELEV.
- 19+21 SERVICE STATIONING
- SOUTH SUBURBAN DISTRICT BOUNDARY
- ⓐ ABANDONED

**SEWER MAINS & LATERALS PLAN**



**ADKINS**  
 CONSULTING ENGINEERING, LLP  
 Klamath Falls, Oregon 97603  
 2950 Shasta Way  
 TEL (541) 884-4666  
 FAX (541) 884-5335

SCALE	1"=100'
DATE	1/3/2017
SHEET	12 OF 52
PROJ.	2048-3602



SHEET B-5

NO. 101717.DWG, P:\Main\Projects\2016\20160909\BND\DWG\EGZ2017121008.PLK, 4/4/2017





SEE SHEET A-7

REV. #1	AERIAL UPDATE	01/2012	SUM
REV. #2	2017 UPDATE	01/2017	DUN
No.	REVISION	DATE	BY

- LEGEND**
- ⊙ SSMH
  - ⊙ SSCO
  - A-1-6-1-1 MANHOLE NUMBER
  - 1+00 STATION
  - 4089.5 APPROX. GROUND ELEV.
  - 4082.23 INVERT ELEV.
  - 19+21 SERVICE STATIONING
  - SOUTH SUBURBAN DISTRICT BOUNDARY
  - (A) ABANDONED

**SEWER  
MAINS & LATERALS  
PLAN**



**ADKINS**  
CONSULTING  
ENGINEERING, LLP

▲ Planning  
▲ Surveying  
▲ Engineering

Klamath Falls, Oregon 97603  
2950 Shasta Way  
TEL (541) 884-4666  
FAX (541) 884-5335

SCALE  
1"=100'

DATE  
1/3/2017

SHEET  
14 OF 52

PROJ. 2048-3602

GRAPHIC SCALE  
100 0 50 100

**SHEET B-7**

SEE SHEET B-7



SEE SHEET B-9

REV. #1	AERIAL UPDATE	SUM	BY
01/2012			
REV. #2	2017 UPDATE	D/JN	DATE
01/2017			

**LEGEND**

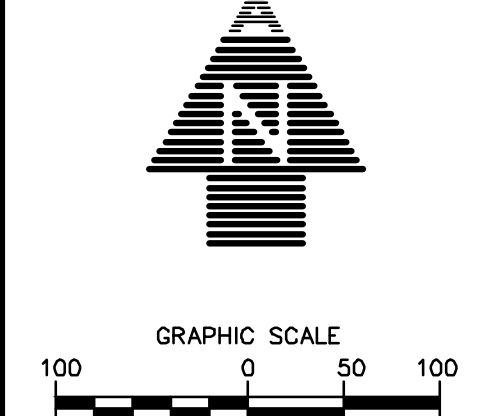
- ⊙ SSMO
- ⊙ SSMC
- A-1-6-1-1 MANHOLE NUMBER
- 1+00 STATION
- 4089.5 APPROX. GROUND ELEV.
- 4082.23 INVERT ELEV.
- 19+21 SERVICE STATIONING
- SOUTH SUBURBAN DISTRICT BOUNDARY
- (A) ABANDONED

**SEWER MAINS & LATERALS PLAN**



**ADKINS**  
 CONSULTING ENGINEERING, LLP  
 Klamath Falls, Oregon 97603  
 2950 Shasta Way  
 TEL (541) 884-4666  
 FAX (541) 884-5335

SCALE	1"=100'
DATE	1/3/2017
SHEET	15 OF 52
PROJ.	2048-3602



SHEET B-8

NUMBERED TO: P:\Main\Projects\2016\20160509\BND\DWG\220321.DWG  
 DATE: 1/3/2017 10:51:31 AM  
 USER: d.johnson







SEE SHEET C-2



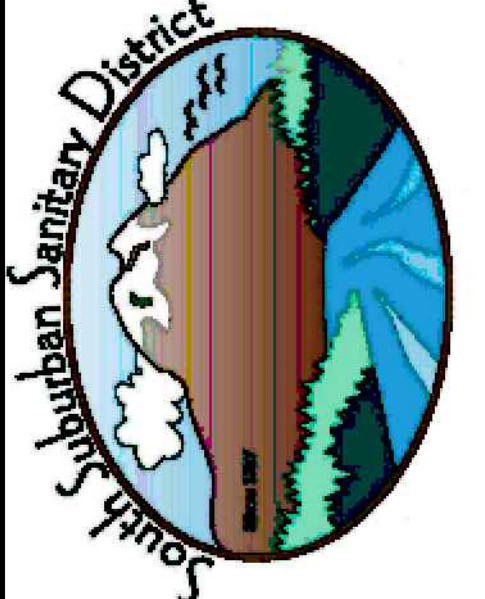
SEE SHEET C-4

REV. #1	AERIAL UPDATE	01/2012	SUM	BY
REV. #2	2017 UPDATE	01/2017	DUN	DATE
No.	REVISION	DATE		

**LEGEND**

- ⊙ SSMH
- ⊙ SSCO
- A-1-6-1-1 MANHOLE NUMBER
- 1+00 STATION
- APPROX. GROUND ELEV. 4082.23
- INVERT ELEV.
- 19+21 SERVICE STATIONING
- SOUTH SUBURBAN DISTRICT BOUNDARY
- (A) ABANDONED

**SEWER  
MAINS & LATERALS  
PLAN**



**ADKINS**  
CONSULTING  
ENGINEERING, LLP

▲ Planning  
▲ Surveying  
▲ Engineering

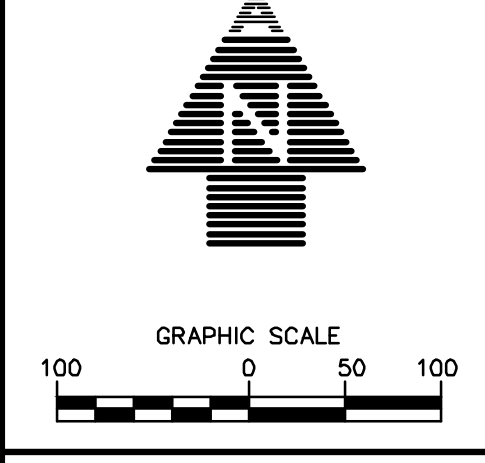
Klamath Falls, Oregon 97603  
2950 Shasta Way  
TEL (541) 884-4666  
FAX (541) 884-5335

SCALE  
1" = 100'

DATE  
1/3/2017

SHEET  
18 OF 52

PROJ. 2048-3602



SHEET C-3

SEE SHEET B-3

SEE SHEET D-3

NUMBERED TO: P:\Main\Per\Users\2016\ADKINS\CD\Proj\6222023\120411\LN.dwg  
 12/15/2016 10:00:00 AM



SEE SHEET C-4

SEE SHEET C-6



SEE SHEET B-5

REV. #1	AERIAL UPDATE	01/2012	SJM	DATE
REV. #2	2017 UPDATE	01/2017	DUN <td>DATE </td>	DATE

**LEGEND**

- SSMH
- SSCO
- A-1-6-1-1 MANHOLE NUMBER
- 1+00 STATION
- 4089.5 APPROX. GROUND ELEV.
- 4082.23 INVERT ELEV.
- 19+21 SERVICE STATIONING
- SOUTH SUBURBAN DISTRICT BOUNDARY
- (A) ABANDONED

**SEWER  
MAINS & LATERALS  
PLAN**

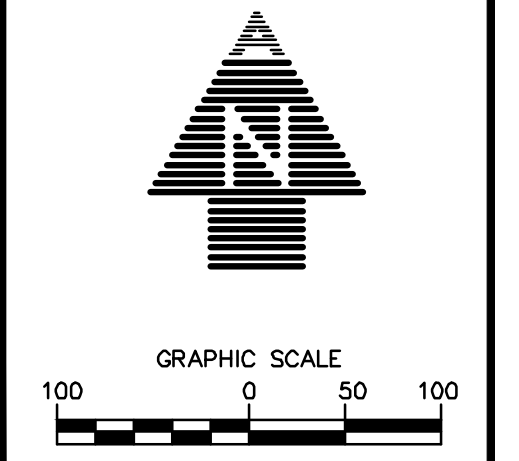


**ADKINS**  
CONSULTING  
ENGINEERING, LLP

▲ Planning  
▲ Surveying  
▲ Engineering

Klamath Falls, Oregon 97603  
2950 Shasta Way  
TEL (541) 884-4666  
FAX (541) 884-5335

SCALE	1"=100'
DATE	1/3/2017
SHEET	20 OF 52
PROJ.	20-048-3602



**SHEET C-5**

NUMBERED TO: P:\Main\Per\Users\2016\ADKINS\CD\Proj\20-048-3602\2017\121514.DWG, 12/15/17, 11:58 AM, 11/17/17

SEE SHEET C-5



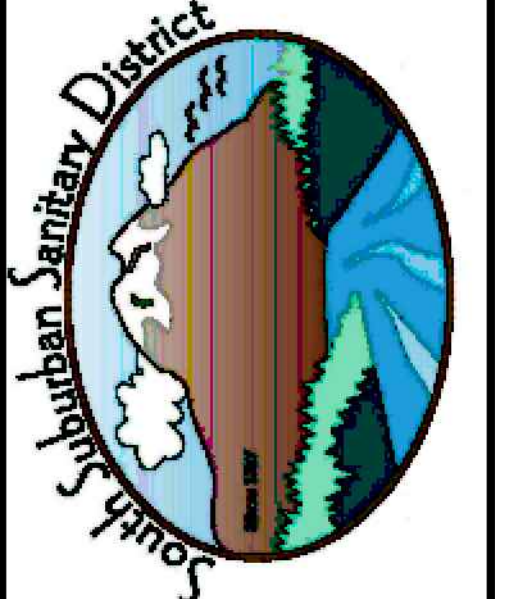
SEE SHEET C-7

REV. #1	AERIAL UPDATE	SUM	BY
01/2012			
REV. #2	2017 UPDATE	DUN	DATE
01/2017			

**LEGEND**

- SSMH
- ⊙ SSCO
- A-1-6-1-1 MANHOLE NUMBER
- 1+00 STATION
- 4089.5 APPROX. GROUND ELEV.
- 4082.23 INVERT ELEV.
- 19+21 SERVICE STATIONING
- SOUTH SUBURBAN DISTRICT BOUNDARY
- (A) ABANDONED

**SEWER  
MAINS & LATERALS  
PLAN**

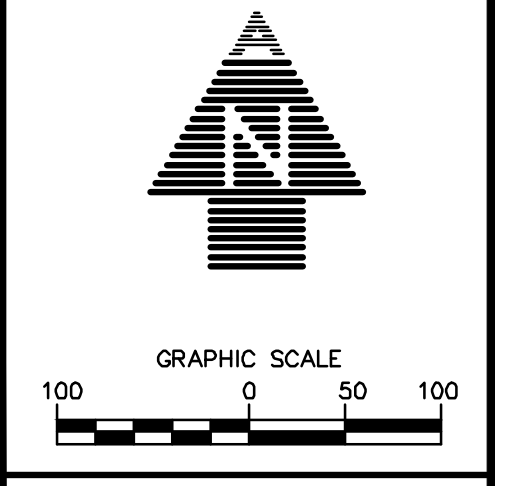


**ADKINS**  
CONSULTING  
ENGINEERING, LLP

- ▲ Planning
- ▲ Surveying
- ▲ Engineering

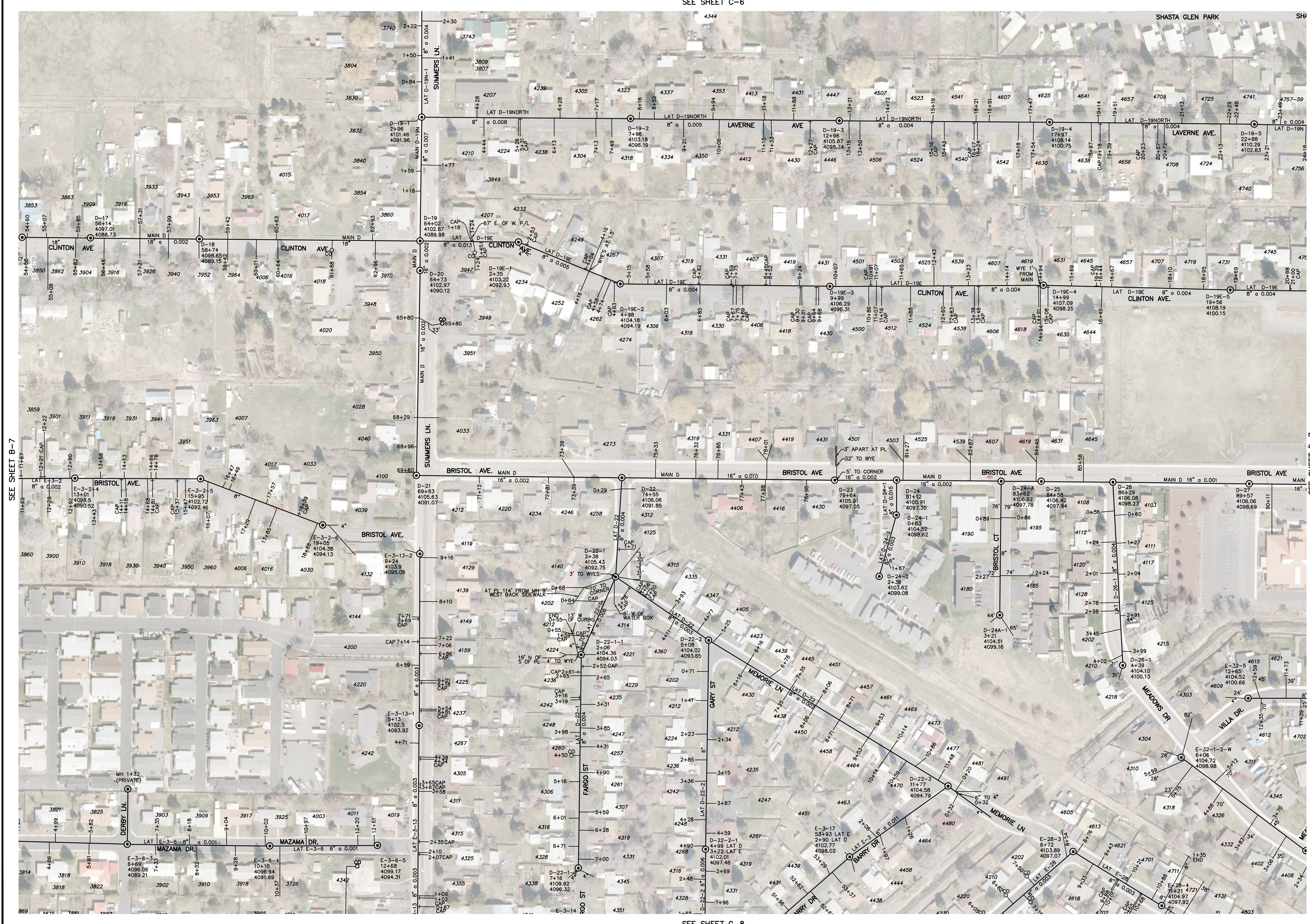
Klamath Falls, Oregon 97603  
2950 Shasta Way  
TEL (541) 884-4666  
FAX (541) 884-5335

SCALE	1"=100'
DATE	1/3/2017
SHEET	21 OF 52
PROJ.	20-08-3602



**SHEET C-6**

NUMBER 3176 © 2017 Adkins Consulting Engineering, LLP  
 14000 NE 14th Street, Suite 200, Klamath Falls, OR 97603  
 503.885.1111

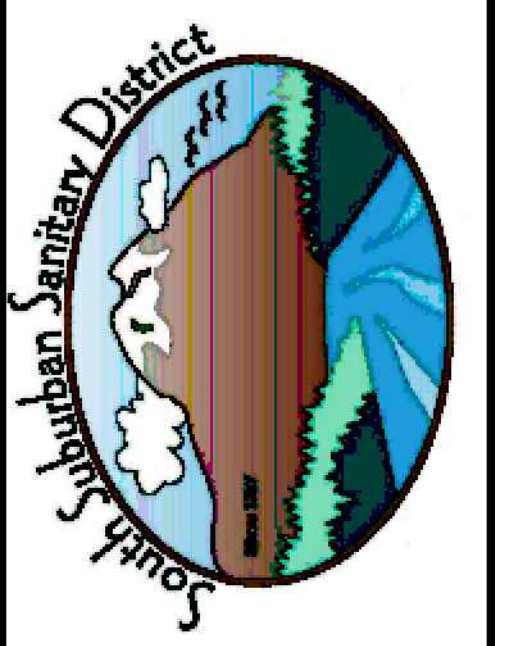


REV. #1	AERIAL UPDATE	01/2012	SJM	BY
REV. #2	2017 UPDATE	01/2017	DUN	DATE
No.	REVISION	DATE		

**LEGEND**

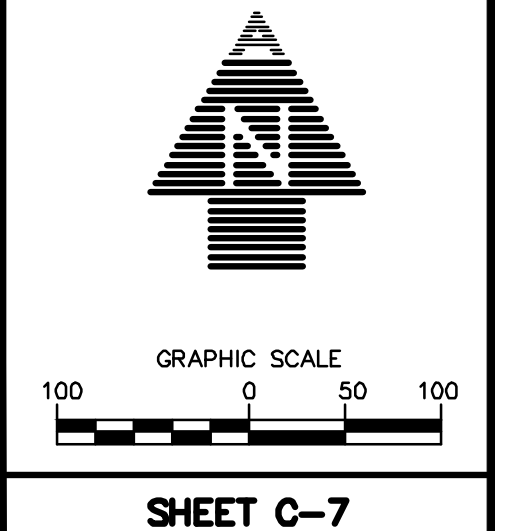
- SSMH
- SSCO
- A-1-6-1-1 MANHOLE NUMBER
- 1+00 STATION
- 4088.5 APPROX. GROUND ELEV.
- 4082.23 INVERT ELEV.
- 19+21 SERVICE STATIONING
- SOUTH SUBURBAN DISTRICT BOUNDARY
- (A) ABANDONED

**SEWER MAINS & LATERALS PLAN**



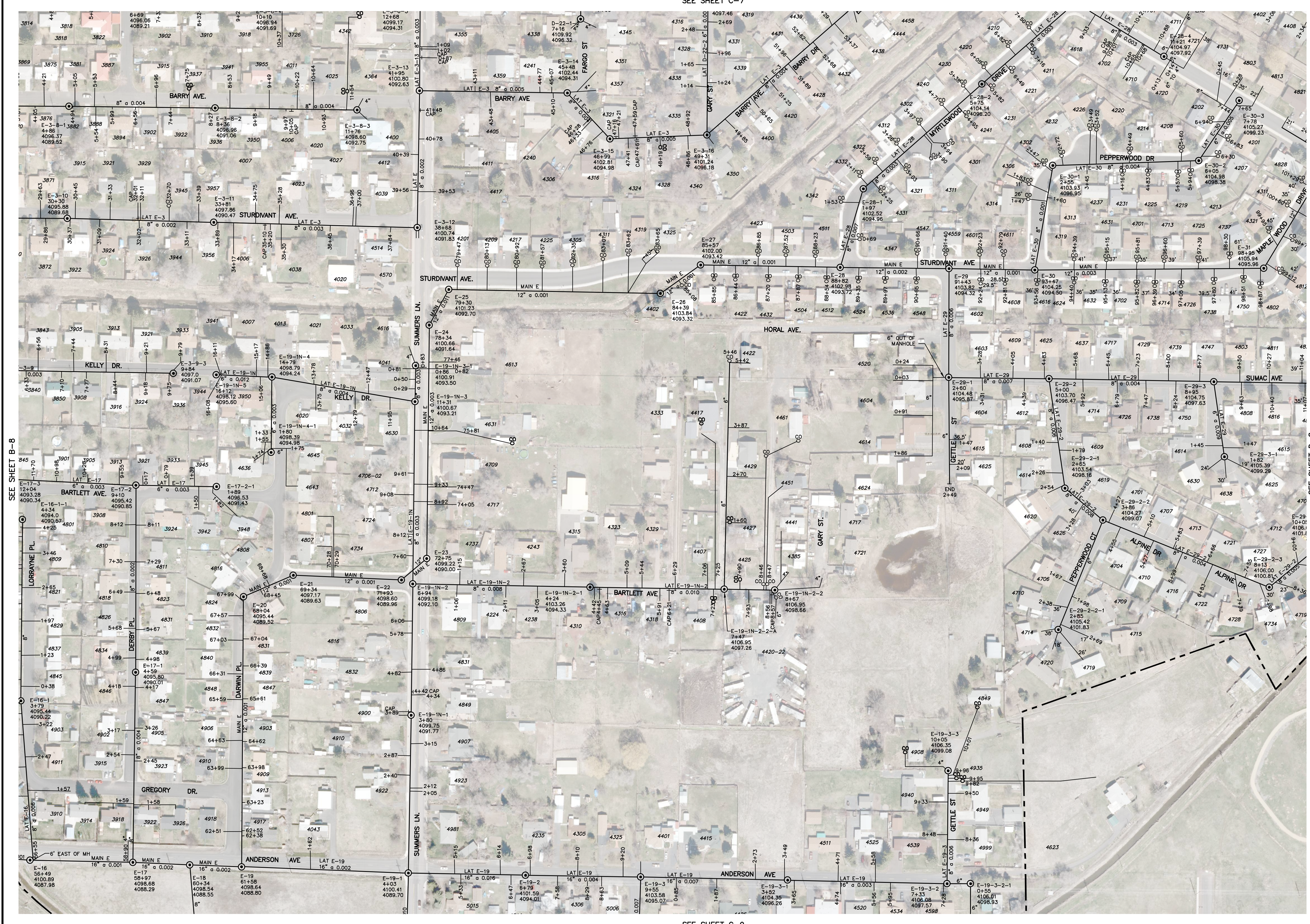
**ADKINS**  
 CONSULTING ENGINEERING, LLP  
 Klamath Falls, Oregon 97603  
 2950 Shasta Way  
 TEL (541) 884-4666  
 FAX (541) 884-5335

SCALE	1"=100'
DATE	1/3/2017
SHEET	22 OF 52
PROJ.	20-48-3602



SEE SHEET C-7

SEE SHEET C-9



REV. #1	AERIAL UPDATE	01/2012	SJM	BY
REV. #2	2017 UPDATE	01/2017	DUN	DATE
No.	REVISION			

**LEGEND**

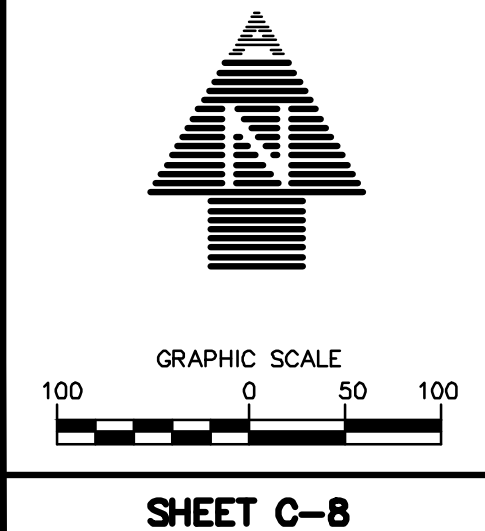
- SSMH
- SSSC
- MANHOLE NUMBER
- STATION
- APPROX. GROUND ELEV.
- INVERT ELEV.
- SERVICE STATIONING
- SOUTH SUBURBAN DISTRICT BOUNDARY
- ABANDONED

**SEWER MAINS & LATERALS PLAN**



**ADKINS**  
 CONSULTING ENGINEERING, LLP  
 Klamath Falls, Oregon 97603  
 2950 Shasta Way  
 TEL (541) 884-4666  
 FAX (541) 884-5335

SCALE	1" = 100'
DATE	1/3/2017
SHEET	23 OF 52
PROJ.	20-048-3602



DRAWN BY: J. D. P. M. DATE: 1/3/2017  
 CHECKED BY: J. D. P. M. DATE: 1/3/2017  
 APPROVED BY: J. D. P. M. DATE: 1/3/2017

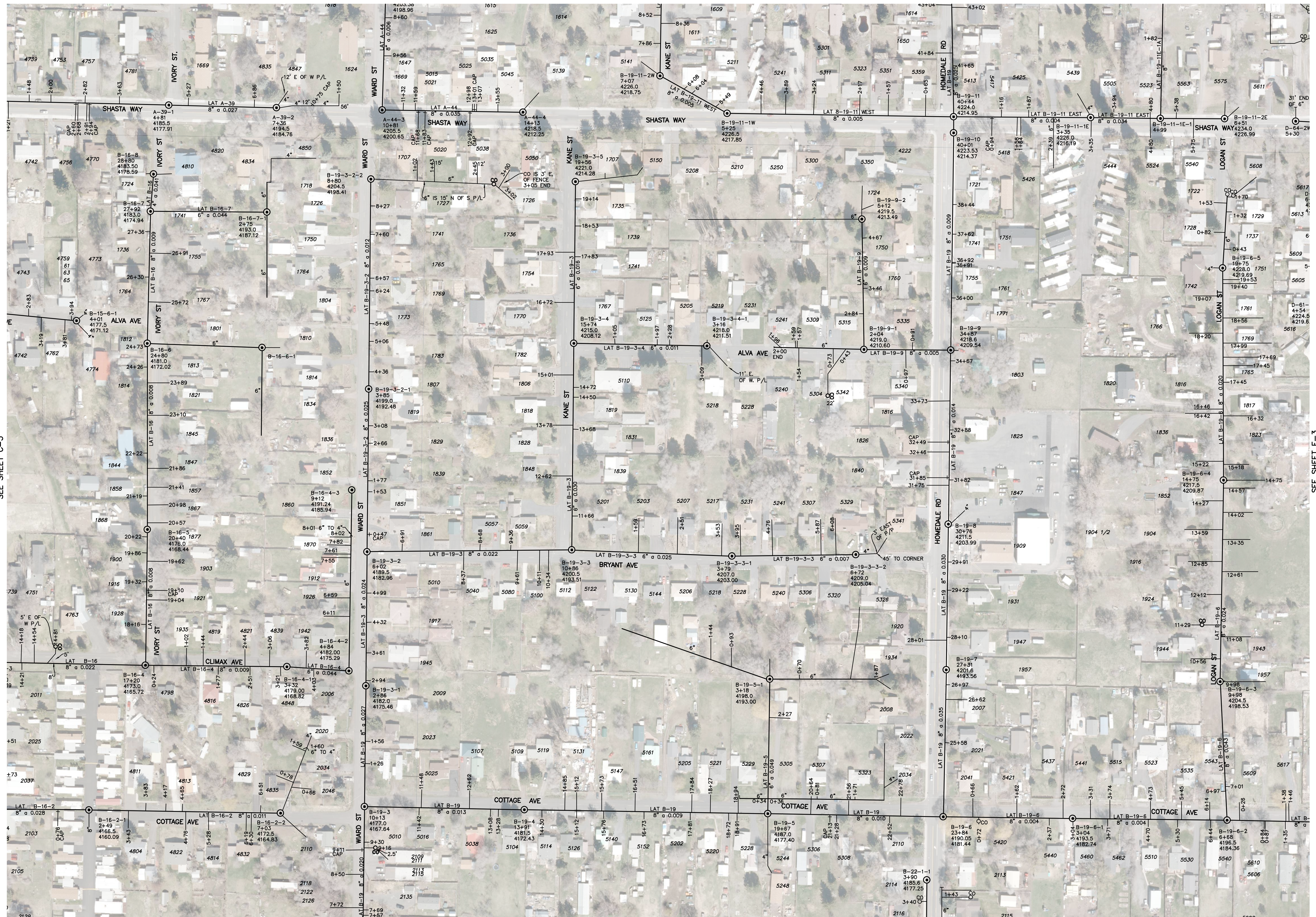








SEE SHEET D-2



SEE SHEET D-4

REV. #1	AERIAL UPDATE	SUM	DATE
01/2012			
REV. #2	2017 UPDATE	DUN	
01/2017			

**LEGEND**

- SSMH
- SSCO
- A-1-6-1-1 MANHOLE NUMBER
- STATION APPROX. GROUND ELEV. INVERT ELEV.
- 4089.5
- 4082.23
- 19+21 SERVICE STATIONING
- SOUTH SUBURBAN DISTRICT BOUNDARY
- ABANDONED

**SOUTH SUBURBAN SANITARY DISTRICT**  
**SEWER MAINS & LATERALS PLAN**



**ADKINS**  
 CONSULTING ENGINEERING, LLP  
 Klamath Falls, Oregon 97603  
 2950 Shasta Way  
 TEL (541) 884-4666  
 FAX (541) 884-5335

SCALE 1"=100'  
 DATE 1/3/2017  
 SHEET 27 OF 52  
 PROJ. 2048-39

GRAPHIC SCALE  
 100 0 50 100

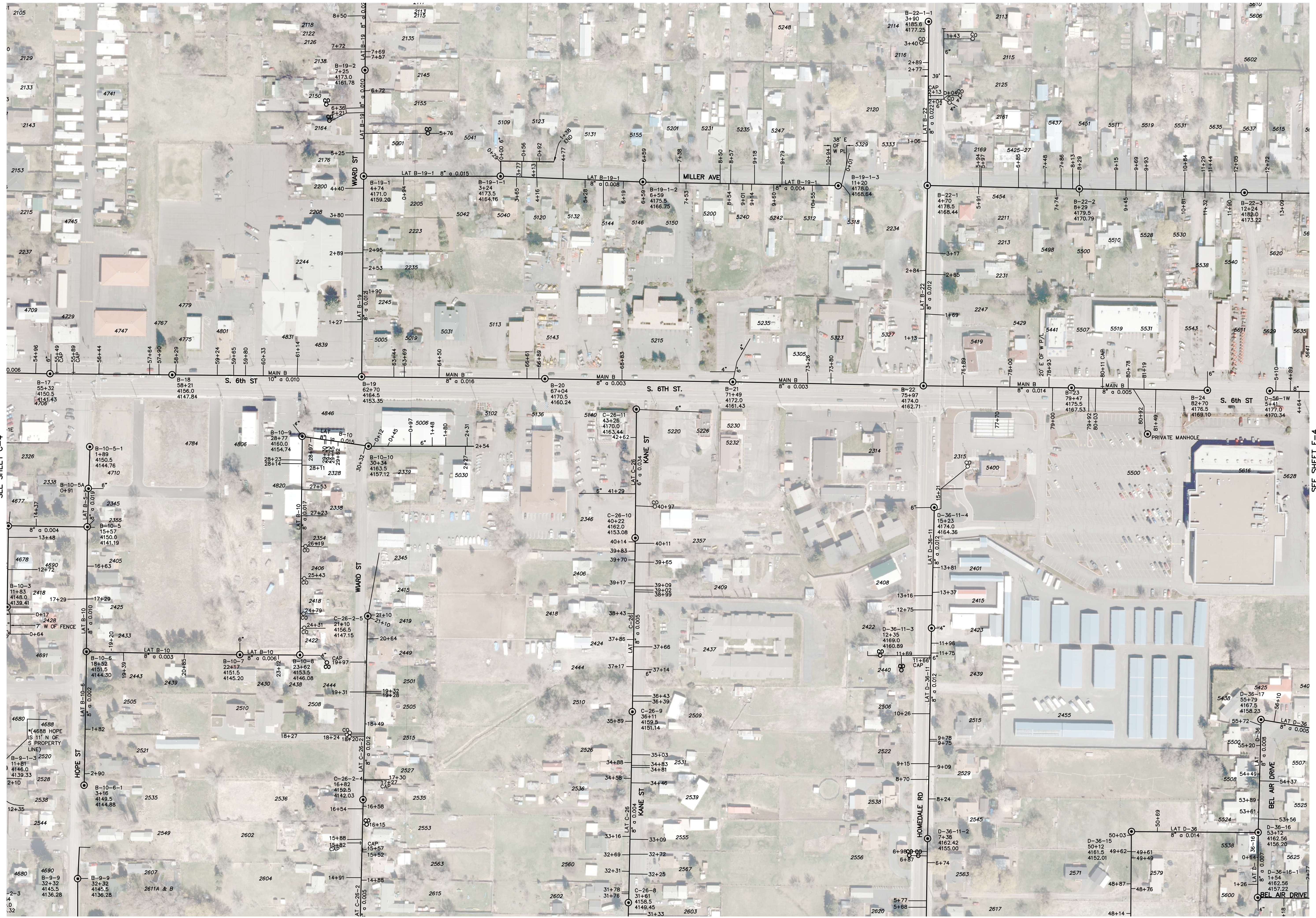
**SHEET D-3**

SEE SHEET C-3

SEE SHEET E-3

NO. 101717.DWG - P:\Main\Projects\2016\20160505\SSD\Map\_62220212101717.DWG  
 1/3/2017 10:00:00 AM

SEE SHEET D-3



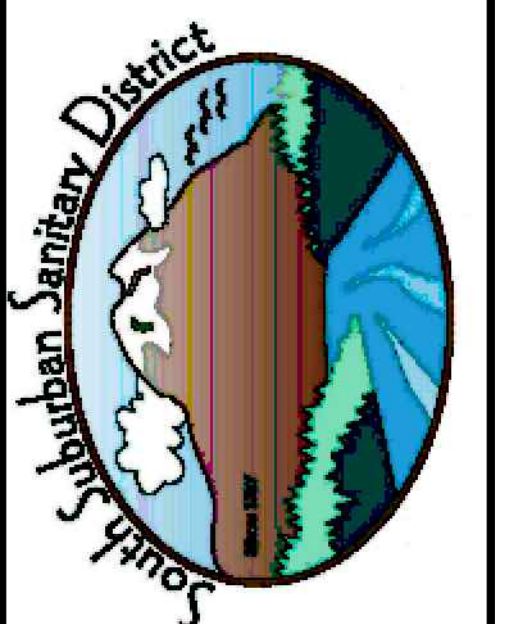
SEE SHEET D-4



SEE SHEET D-5

REV. #1	AERIAL UPDATE	01/2012	SJM
REV. #2	2017 UPDATE	01/2017	DUN
No.	REVISION	DATE	BY

**SEWER  
MAINS & LATERALS  
PLAN**



**ADKINS**  
CONSULTING  
ENGINEERING, LLP

- ▲ Planning
- ▲ Surveying
- ▲ Engineering

Klamath Falls, Oregon 97603  
2950 Shasta Way  
TEL (541) 884-4666  
FAX (541) 884-5335

SCALE  
1"=100'

DATE  
1/3/2017

SHEET  
29 OF 52

PROJ. 2048-39

GRAPHIC SCALE

100 0 50 100

SHEET D-5

H:\DRI\1710 - 17 Main\Per\1710-17 Main\1710-17 Main.dwg, 6/22/2017 12:33:12 PM, eap@adkins.com





SEE SHEET D-7

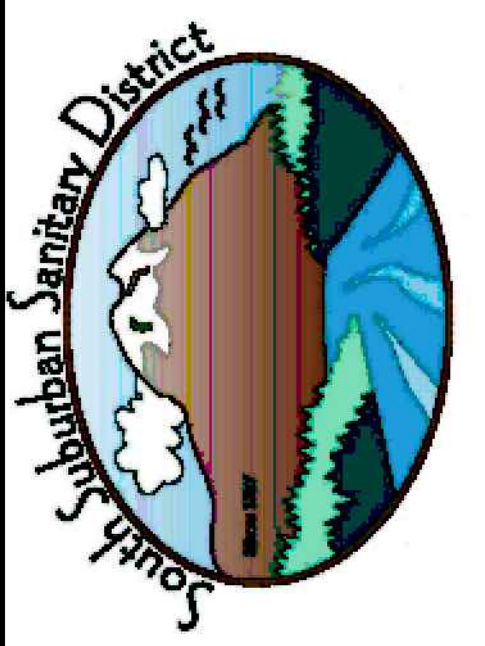


SEE SHEET C-8

REV. #1	AERIAL UPDATE	S.M.	D.J.N.
01/2012			
REV. #2	2017 UPDATE	01/2017	

LEGEND	
	SSMH
	SSCO
A-1-6-1-1	MANHOLE NUMBER
1+00	STATION
4089.5	APPROX. GROUND ELEV.
4082.23	INVERT ELEV.
19+21	SERVICE STATIONING
	SOUTH SUBURBAN DISTRICT BOUNDARY
	ABANDONED

**SEWER  
MAINS & LATERALS  
PLAN**



**ADKINS**  
CONSULTING  
ENGINEERING, LLP

▲ Planning  
▲ Surveying  
▲ Engineering

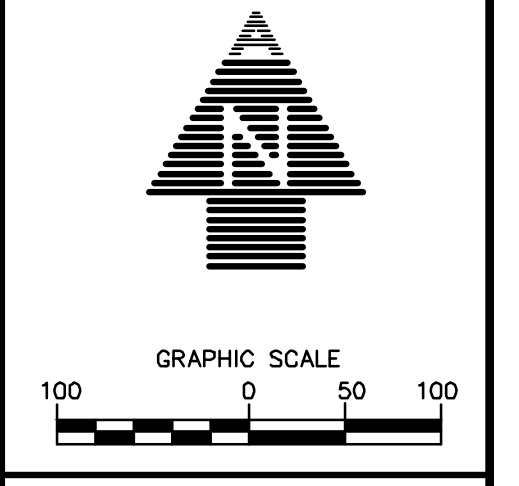
Klamath Falls, Oregon 97603  
2950 Shasta Way  
TEL (541) 884-4666  
FAX (541) 884-5335

SCALE  
1"=100'

DATE  
1/3/2017

SHEET  
32 OF 52

PROJ. 2048-39



NO. 101710 - P:\Main\Per\101710\101710.dwg, 6/22/2017 11:11:17 AM, eng/bob



SEE SHEET D-1



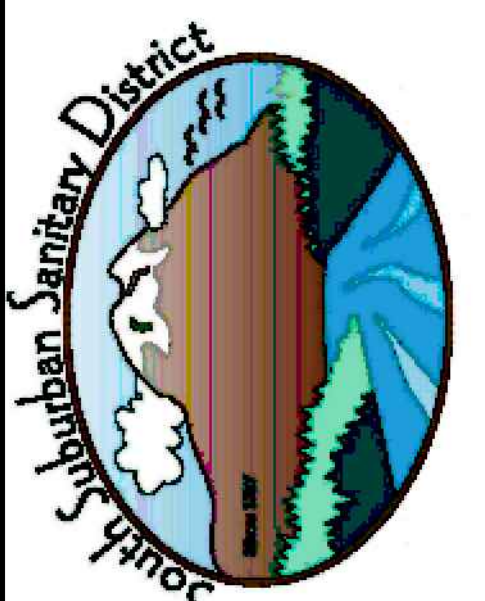
SEE SHEET E-2

REV. #2	2017 UPDATE	01/2017	D.J.N.
No.	REVISION	DATE	BY

**LEGEND**

- SSMH
- SSCO
- A-1-6-1-1 MANHOLE NUMBER
- 1+00 STATION
- 4089.5 APPROX. GROUND ELEV.
- 4082.23 INVERT ELEV.
- 19+21 SERVICE STATIONING
- SOUTH SUBURBAN DISTRICT BOUNDARY
- (A) ABANDONED

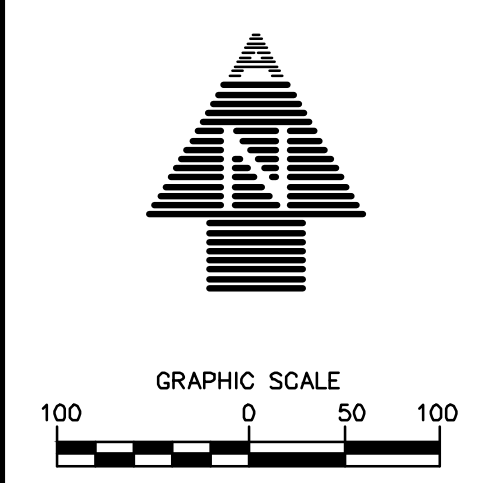
**SEWER MAINS & LATERALS PLAN**



**ADKINS**  
 CONSULTING ENGINEERING, LLP  
 Planning  
 Surveying  
 Engineering

Klamath Falls, Oregon 97603  
 2950 Shasta Way  
 TEL (541) 884-4666  
 FAX (541) 884-5335

SCALE	1"=100'
DATE	1/3/2017
SHEET	33 OF 52
PROJ.	2048-39



**SHEET E-1**

NO. 10117.DWG © 2017 Adkins Consulting Engineering, LLP. All rights reserved.







SEE SHEET D-4

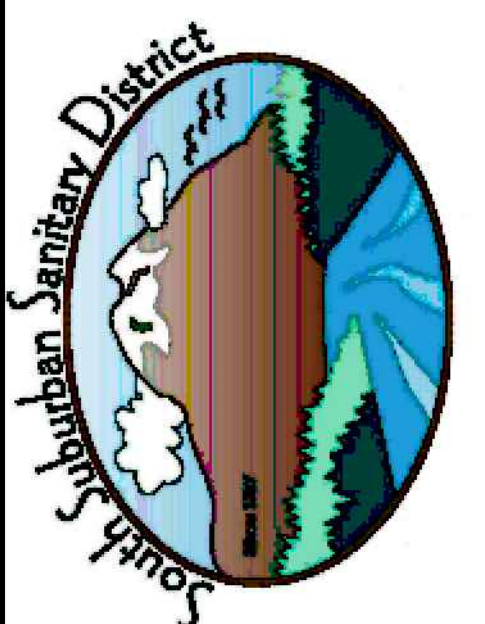
SEE SHEET F-4

REV. #2	2017 UPDATE	01/2017	D.J.N.
No.	REVISION	DATE	BY

**LEGEND**

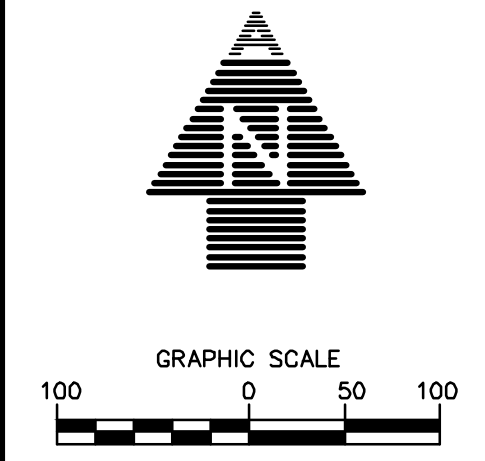
- SSMH
- SSCO
- A-1-6-1-1 MANHOLE NUMBER
- 1+00 STATION
- 4089.5 APPROX. GROUND ELEV.
- 4082.23 INVERT ELEV.
- 19+21 SERVICE STATIONING
- SOUTH SUBURBAN DISTRICT BOUNDARY
- (A) ABANDONED

**SEWER MAINS & LATERALS PLAN**



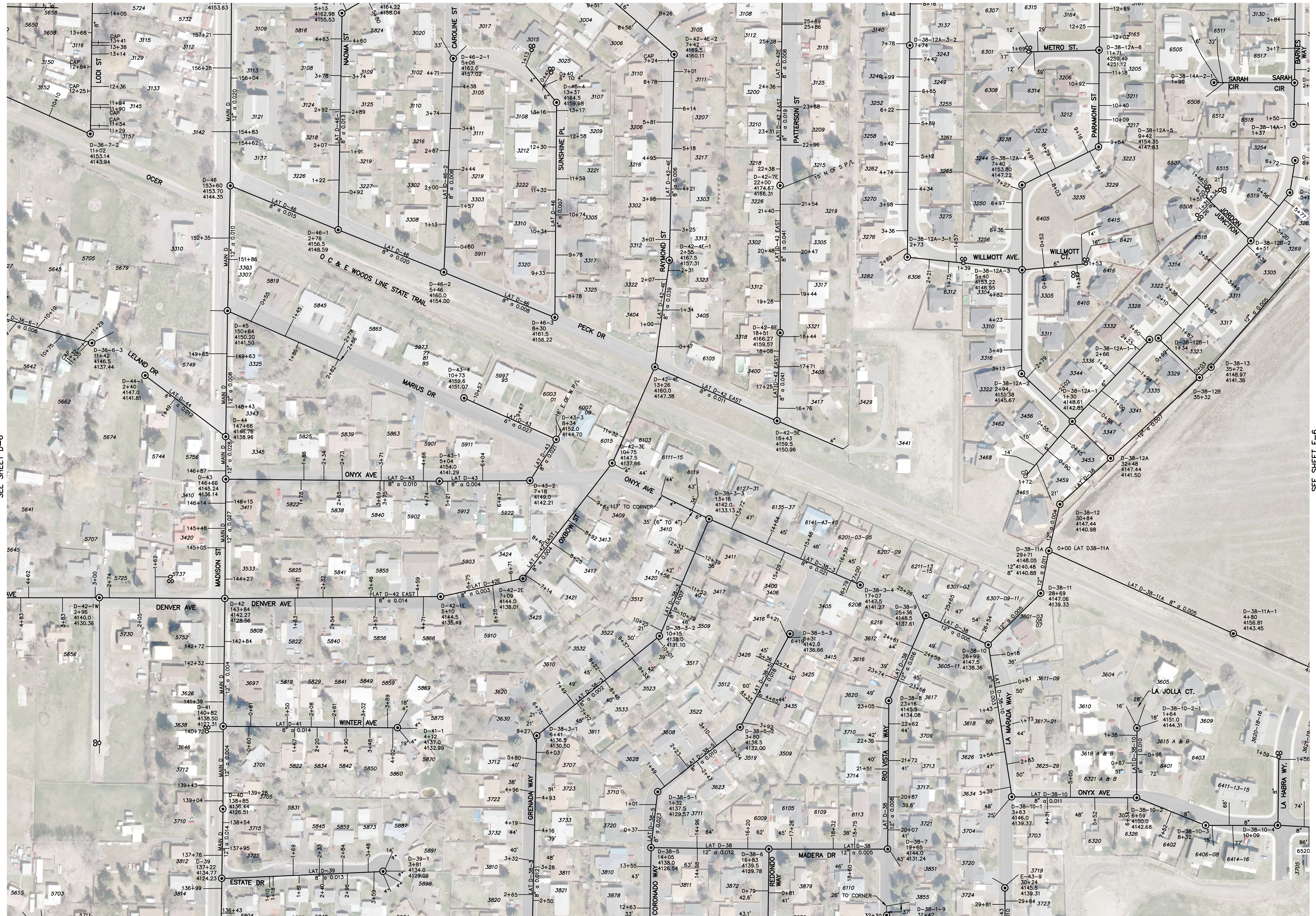
**ADKINS**  
 CONSULTING ENGINEERING, LLP  
 Klamath Falls, Oregon 97603  
 2950 Shasta Way  
 TEL (541) 884-4666  
 FAX (541) 884-5335

SCALE	1"=100'
DATE	1/3/2017
SHEET	36 OF 52
PROJ.	2048-39





SEE SHEET E-5



SEE SHEET D-6

SEE SHEET E-7

REV. #2	2017 UPDATE	01/2017	D.N.

LEGEND	
	SSMH
	SSCO
	MANHOLE NUMBER
	STATION
	APPROX. GROUND ELEV.
	INVERT ELEV.
	SERVICE STATIONING
	SOUTH SUBURBAN DISTRICT BOUNDARY
	ABANDONED

**SEWER MAINS & LATERALS PLAN**



**ADKINS**  
 CONSULTING ENGINEERING, LLP  
 Planning  
 Surveying  
 Engineering

Klamath Falls, Oregon 97603  
 2950 Shasta Way  
 TEL (541) 884-4666  
 FAX (541) 884-5335

SCALE 1"=100'

DATE 1/3/2017

SHEET 38 OF 52

PROJ. 2048-39

GRAPHIC SCALE









SEE SHEET E-2

SEE SHEET F-3

REV. #2	2017 UPDATE	01/2017	D.J.N.
No.	REVISION	DATE	BY

**LEGEND**

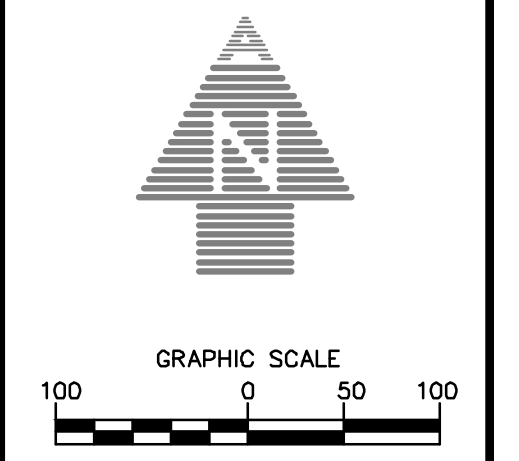
- ⊙ SSMH
- ⊙ SSCO
- A-1-6-1-1 MANHOLE NUMBER
- 1+00 STATION
- 4089.5 APPROX. GROUND ELEV.
- 4082.23 INVERT ELEV.
- 19+21 SERVICE STATIONING
- SOUTH SUBURBAN DISTRICT BOUNDARY
- (A) ABANDONED

**SEWER MAINS & LATERALS PLAN**

South Suburban Sanitary District

**ADKINS**  
 CONSULTING ENGINEERING, LLP  
 Planning Surveying Engineering  
 Klamath Falls, Oregon 97603  
 2950 Shasta Way  
 TEL (541) 884-4666  
 FAX (541) 884-5335

SCALE	1"=100'
DATE	1/3/2017
SHEET	41 OF 52
PROJ.	2048-39



**SHEET F-2**

1/10/2017 10:41 AM P:\Users\paul.upton\2016\2048-39\DWG\41\_SHEET F-2.dwg 20170103 10:41 AM paul.upton

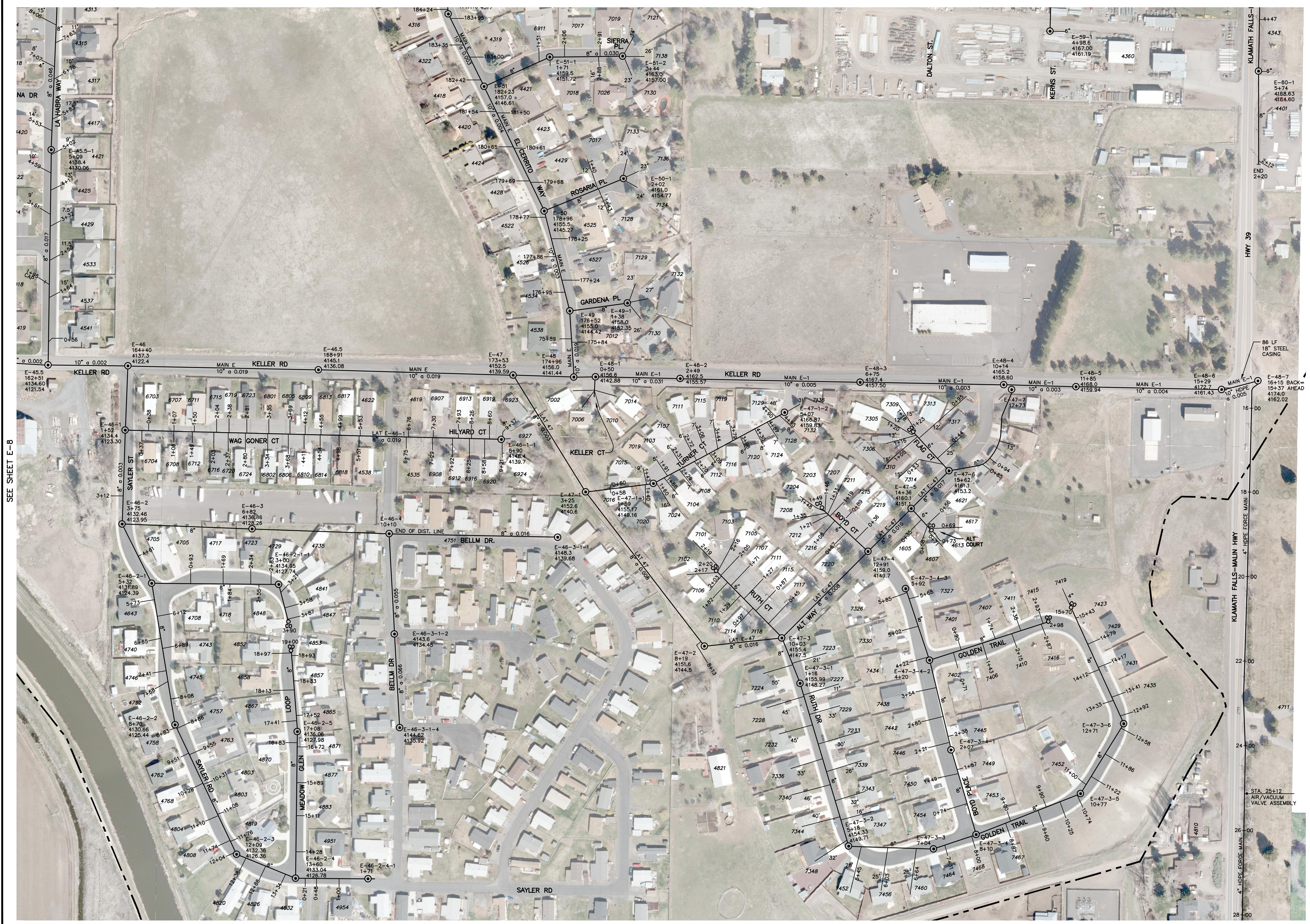












SEE SHEET E-8

REV. #2	2017 UPDATE	01/2017	D.N.
No.	REVISION	DATE	BY

**LEGEND**

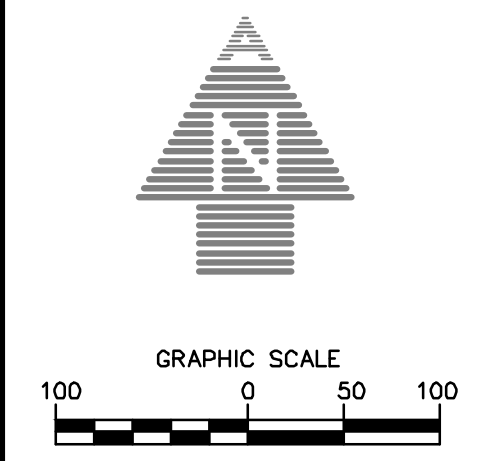
- SSMH
- SSCO
- MANHOLE NUMBER
- STATION
- APPROX. GROUND ELEV.
- INVERT ELEV.
- SERVICE STATIONING
- SOUTH SUBURBAN DISTRICT BOUNDARY
- ABANDONED

**SEWER MAINS & LATERALS PLAN**



**ADKINS**  
 CONSULTING  
 ENGINEERING, LLP  
 Klamath Falls, Oregon 97603  
 2950 Shasta Way  
 TEL (541) 884-4866  
 FAX (541) 884-5335

SCALE  
 1"=100'  
 DATE  
 1/3/2017  
 SHEET  
 47 OF 52  
 PROJ. 2048-39

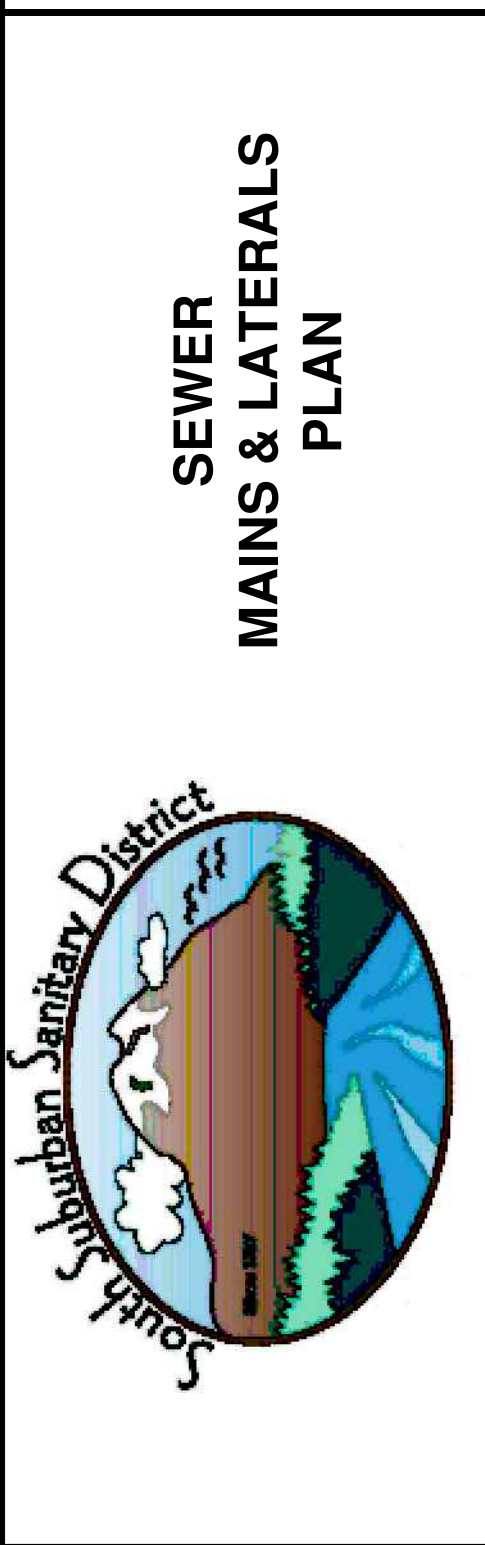


NO. 101717.DWG - 1/3/2017 10:00 AM - 1/3/2017 10:00 AM - 1/3/2017 10:00 AM

REV. #2	2017 UPDATE	01/2017	D.J.N.
No.	REVISION	DATE	BY

**LEGEND**

⊙	SSMH
⊙	SSCO
A-1-6-1-1	MANHOLE NUMBER
1+00	STATION
4089.5	APPROX. GROUND ELEV.
4082.23	INVERT ELEV.
19+21	SERVICE STATIONING
---	SOUTH SUBURBAN DISTRICT BOUNDARY
(A)	ABANDONED



**ADKINS**  
CONSULTING  
ENGINEERING, LLP

▲ Planning  
▲ Surveying  
▲ Engineering

Klamath Falls, Oregon 97603  
2950 Shasta Way  
TEL (541) 884-4666  
FAX (541) 884-5335

SCALE  
1"=100'

DATE  
1/3/2017

SHEET  
48 OF 52

PROJ. 2048-39

GRAPHIC SCALE

**SHEET F-9**

**SEWER  
MAINS & LATERALS  
PLAN**

SEE SHEET F-8



SEE ALIGNMENT BELOW

SEE ALIGNMENT ABOVE



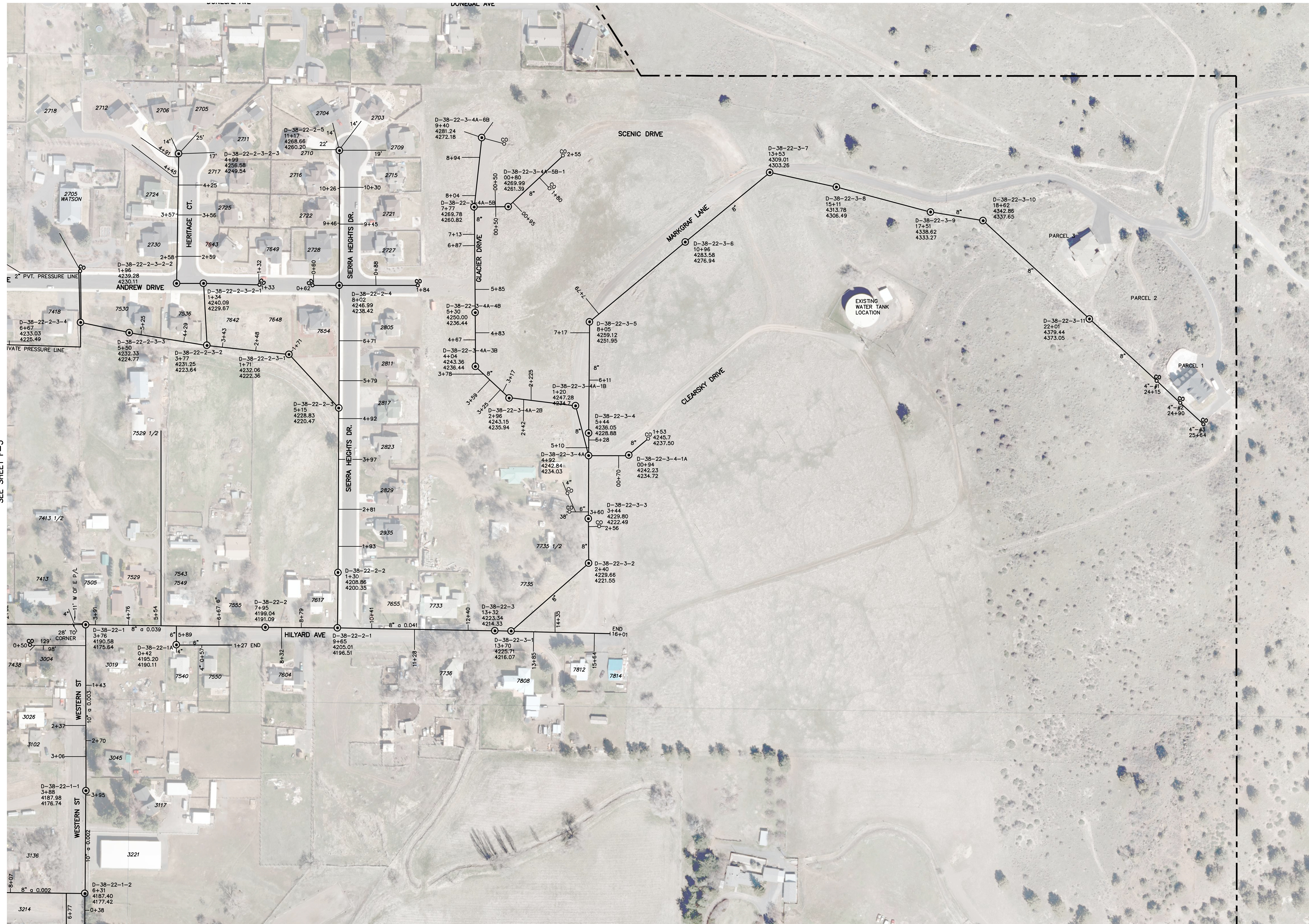
SEE SHEET F-10

\\JLH\B1710 - P\Main\Per\1048\2016\DWG\DWG\FINAL.dwg, 6/22/2017 12:32:01 PM, R:\p\dwg









SEE SHEET F-5

REV. #1	AERIAL UPDATE	S.M.	D.N.
01/2012			
REV. #2	2017 UPDATE	01/2017	

No.	REVISION	DATE	BY

**LEGEND**

- SSMH
- SSCO
- A-1-6-1-1 MANHOLE NUMBER
- 1+00 STATION
- 4089.5 APPROX. GROUND ELEV.
- 4082.23 INVERT ELEV.
- 19+21 SERVICE STATIONING
- SOUTH SUBURBAN DISTRICT BOUNDARY
- (A) ABANDONED

**SEWER  
MAINS & LATERALS  
PLAN**



**ADKINS**  
 CONSULTING  
 ENGINEERING, LLP  
 Klamath Falls, Oregon 97603  
 2950 Shasta Way  
 TEL (541) 884-4666  
 FAX (541) 884-5335

SCALE	1"=100'
DATE	1/3/2017
SHEET	51 OF 52
PROJ.	2048-39

